

Spin TOUCH



Code du produit
41113571

Analyse de l'eau

Utilisation

- Permet de mesurer les 11 principaux paramètres d'analyse des eaux de piscines et de Spas :
- Chlore libre, chlore total, brome, alcalinité totale, pH, dureté de l'eau, taux de cuivre, de fer, stabilisant, phosphate et sel.
- Fonctionne de pair avec l'Ocediciel

Spécifications

Paramètres	Plages d'analyse	Unités
Chlore libre	0,00 - 15,00	mg/L
Chlore total	0,00 - 15,00	mg/L
Brome	0,00 - 33,00	mg/L
Alcalinité totale (TAC)	0 - 250	mg/L
pH	6,6 - 8,6	
Dureté (TH)	0 - 1200	mg/L
Cuivre	0,0 - 3,0	mg/L
Fer	0,0 - 3,0	mg/L
Stabilisant	5 - 150	mg/L
Phosphate	0 - 2,5	mg/L
Sel	0 - 5	g/L

Alimentation

L'appareil contient une batterie intégrée. Une fois chargée, celle-ci permet de réaliser environ 150 analyses. Un indicateur lumineux bleu clignote une fois par seconde pour indiquer lorsque la batterie est faible.

A partir du premier clignotement, l'appareil peut mener encore 5 tests.

Avantages produit

- Rapidité de l'analyse (11 paramètres en 2 minutes)
- Qualité de l'analyse
- Avec l'Ocediciel un rapport détaillé avec des préconisations d'entretien
- Fourni avec une malette de transport
- Affichage en direct sur le boîtier
- Batterie intégrée
- 6 lentilles d'analyses pour plus de précision
- Gestion des résultats par l'appareil pour plus de fiabilité

Mode d'emploi

Analyse d'un échantillon d'eau :

Injecter l'échantillon dans un disque unique contenant tous les réactifs dans des chambres individuelles étanches.

Insérer ensuite le disque dans le photomètre.

En 60 secondes, tous les paramètres sont analysés et les résultats enregistrés directement sur le logiciel d'analyse. Les plages d'analyse des paramètres sont plus étendues et aussi précises qu'avec un photomètre classique.

Le SPIN TOUCH envoie les résultats par Bluetooth : il est possible de récupérer les résultats d'analyses directement sur son smartphone ou sa tablette. Le port USB permet de connecter l'appareil directement sur son PC.

Utilisation avec l'Ocediciel :

Dans un premier temps télécharger WaterLink(R) Connect, sur PC ou tablette Windows (hors Windows RT).

Lancer le logiciel OCEDICIEL en lien avec le SPIN-TOUCH. Une icône apparaît automatiquement dans l'interface d'analyse, elle permet de lancer automatiquement l'appareil après avoir placé le disque d'analyse. Entrer seulement le descriptif du bassin, lancer l'analyse, les paramètres se complètent automatiquement.





WaterLink® SpinTouch®

The Ultimate
Automated Water
Analyzer



Certified to
NSF/ANSI Standard 50

Ready to go anywhere!

Pool Operators | Service Technicians | Retail Professionals



“Every now and then a technology emerges that changes people’s lives. For people who test water, that time is now.”

— David LaMotte, President

WaterLink® SpinTouch®

The innovative **WaterLink® Spin Touch®** photometer does all your pool and spa water testing for you wherever you need it—in the field or in the store! Each sealed reagent disk contains the precise amount of reagent needed to run a complete series of tests in just 30 or 60 seconds. Simply fill a reagent disk with a water sample, place it in the meter, tap “start”, and all your vital tests are done automatically.

This is the most advanced system for precise use of wet chemistry methods ever produced! Now pool and spa analysts can achieve precision without time consuming test and clean-up procedures. This ground-breaking analysis system is so simple anyone can use it! No vials to fill, no prep time, no guessing!

Reliable Results

- Virtually Eliminates User-Error
- Pre-Measured Reagents and Pre-Measured Sample
- Exact Reaction Time and Auto-Blanking
- Meter Calibration Check System
- 6-Wavelength Photometer
- Advanced Optics

Super Fast & Simple

- 30 Seconds for 3-Test Disk, 60 Seconds for 10-Test Disk
- Fill Disk and Insert > Tap “Start Test” > Read Results

Auto-Record Keeping

- Stores Test Dates, Times, Results
- Upload to Cloud, Download to Computer, Print to Bluetooth® Printer [Code 5-0066]

Stand-Alone or Cloud Ready!

- No Computer, Smartphone, or Tablet Needed
- Touchscreen Operation [multi-lingual]
- Communicate through Bluetooth® or USB

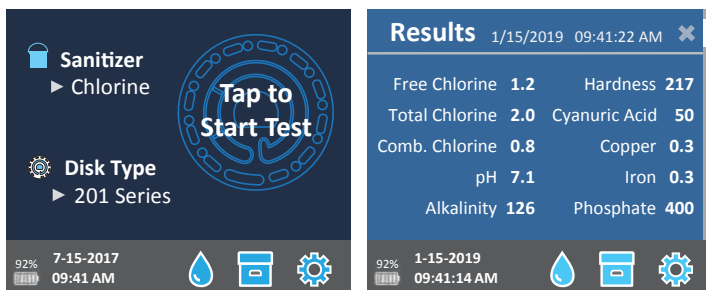
New 3-Use Disk Cuts Costs

- 3-Use Disk—Results in 30 Seconds!
- Meter Knows Which Test Section is New Test
- Also Runs 10-Test Disks for Full Test Battery—Results in 60 Seconds! [see various offerings on page 4]

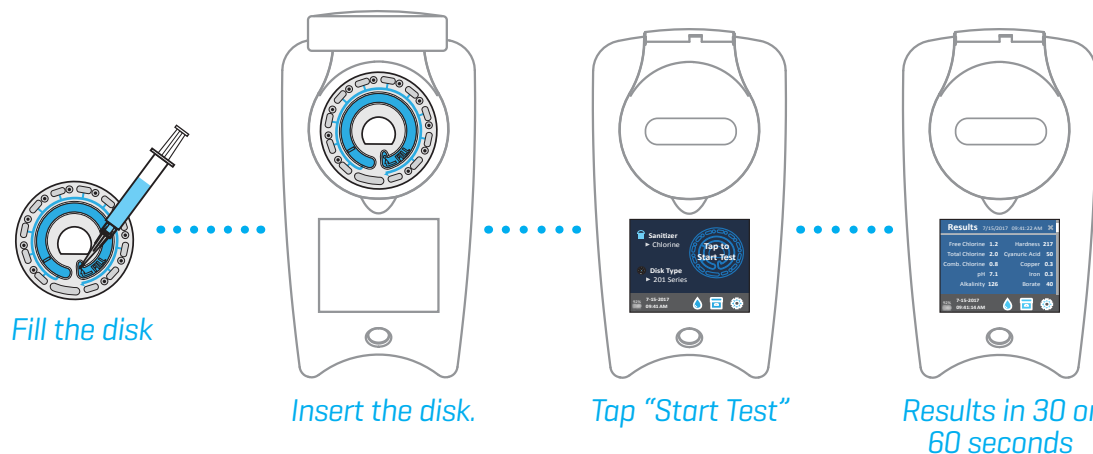
Rugged and Portable

- Innovative Water-Resistant Housing
- Internal, Rechargeable Batteries
- Optional Heavy-Duty, Waterproof Carrying Case

Note: The labs listed to the right do not include WaterLink® Spin Disks which are sold separately.



Just Add Water for a Complete Pool Profile—Results in only 30 or 60 Seconds!



So Simple!
So Fast!
So Precise!

SPECIFICATIONS

Instrument Type:	Centrifugal Fluidics Photometer
6 Wavelengths:	390 nm, 428 nm, 470 nm, 525 nm, 568 nm, 635 nm
Display:	Color Capacitive Touchscreen, 3.5", 320 X 240 pixel resolution
Languages	English, French, Spanish, German, Italian, Portuguese, Dutch, Swedish
Batteries:	Lithium Ion, Rechargeable (Full Charge in 10 hours), 150 tests per charge
Communication:	Bluetooth, USB-C
Calibration:	Factory Set, Field Calibration via Internet Connection
Data Storage:	Last 250 Test Results with Date and Time
Water Resistance:	Rubber Over-molded Base, Rubber USB Port Plug, Gasketed Display and Hinge
Size & Weight:	8.5 L x 4.9 W x 4.1 H inches; 1.74 lb; 22.6 L x 12.7 W x 11.4 H cm; 0.79 kg
Operation:	Single On/Off/Reset Button with Indicator Light, Touchscreen
Firmware:	Internet Updateable (New Tests, New Test Calibrations, etc.)
Printer:	Optional Bluetooth® Printer (Code 5-0066); 384 dots per line at 8 dots/mm resolution
Certification	CE, Certified to NSF/ANSI Standard 50

WaterLink® Spin Touch® Code 3580-EU

Includes: Photometer, Instruction Manual, Quick-Start Guide, 3 Syringes, Meter Check Disk, USB Cord with USB Wall Adapter, In-Store Kit [counter mat, poster, window decal, etc.].



3580

Mobile WaterLink® Spin Touch® Code 3581-EU

Includes: All of the above plus **Waterproof Carrying Case** with Foam Inserts [holds meter and accessories]; does not include In-Store Kit.



3581



**“The genius behind the Spin Touch® is its *Patented Centrifugal Fluidics Reagent Disk*—
designed to analyze 10 or 3 parameters simultaneously!”**

WaterLink® Spin Disk Series

Order Code	4328-H	4329-H	4330-H	4331-H	4334-H	4335-H
Uses per Disk	Single	Single	Single	Single	3	3
Test Parameter	Range					
Free Chlorine (DPD)	0-15 ppm	■	■	■		■
Total Chlorine (DPD)	0-15 ppm	■	■	■		■
Bromine (DPD)	0-33 ppm	■	■	■		■
pH	6.4-8.6	■	■	■	■	■
Calcium Hardness	0-800 ppm	■	■	■	■	
Total Alkalinity	0-250 ppm	■	■	■	■	■
Cyanuric Acid	5-150 ppm	■	■	■		
Copper	0-3.0 ppm	■	■	■	■	
Iron	0-3.0 ppm	■	■	■	■	
Salt	0-5000 ppm	■	■	■		
Phosphate	0-2000 ppb		■			
Borate	0-80 ppm			■	■	
Biguanide	0-70 ppm				■	
Biguanide Shock	0-250 ppm				■	

Disk Patent No. 8,734,734 | FCI Patent No. 8,987,000 | TCI Patent No. 8,993,337
FCI EU Patent No. EP2784503 A1

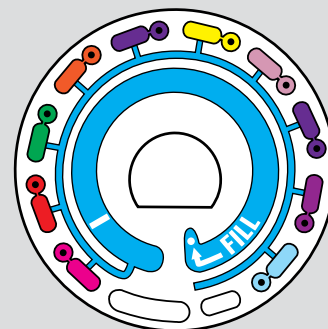


RECYCLE YOUR DISKS!

Ship us your used disks—we'll grind and recycle them. For details, go to www.waterlinkspintouch.com/support

10 Test Parameters Disks

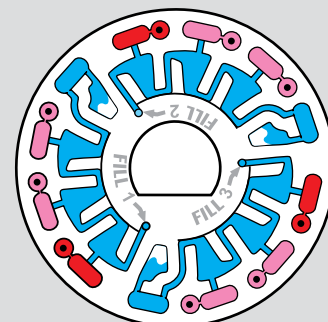
Ideal for Service, In-Store, and Public Pool Testing



60
SECONDS

Test 3 Parameters, 3 Times!

Ideal for Public Pools testing throughout the day



30
SECONDS

Combined Chlorine is calculated by Spin Touch®



Certified to NSF/ANSI Standard 50

The NSF/ANSI 50 certification mark on a water quality testing device (WQTD) used in recreational waters, such as pools and spas, means that the product was reviewed and certified by NSF International to meet applicable American National Standards for product design and performance. NSF tests and re-tests products to confirm that they comply with all requirements of certification for performance, accuracy and operating range. Certification levels of L1, L2, and L3 are possible with L1 being the highest rating.

Test Factor	Application	NSF Certified Range	NSF Level
			Accuracy/Overall
pH	Pool	6.4-8.6	L1
	Spa/Hot Tub	6.4-8.6	L1
Free Chlorine	Pool	0-15 ppm	L1
	Spa/Hot Tub	0-7 ppm	L1
Chlorine, Combined	Pool	0-1 ppm	L1
	Spa/Hot Tub	0-1 ppm	L1
Cyanuric Acid	Pool	5-50 ppm	L1

Other test factors not evaluated by NSF. Go to www.nsf.org for a current listing of LaMotte NSF certified products.



Tel: +44 (0) 1926 498203
Email: sales@lamotte-europe.com
waterlinkspintouch.com | lamotte-europe.com

