

SKIMMER SFIORATORI CON CESTELLO ESTRAZIONE FRONTALE

EDGE SKIMMERS WITH FRONTAL EXTRACTION BASKET

SKIMMER À DÉBORDEMENT AVEC PANIER AMOVIBLE FRONTAL

Skimmer in acciaio inox AISI 316L-V4A PER BORDO SFIORATORE CON CESTELLO AD ESTRAZIONE FRONTALE. Attacchi da 2" F.

Ⓖ AISI 316L-V4A stainless steel skimmer for overflow edge with frontal extraction basket. 2" F connections".

Ⓕ Skimmer en inox AISI 316L-V4A pour bord à débordement avec panier amovible frontal. Raccords 2" F.



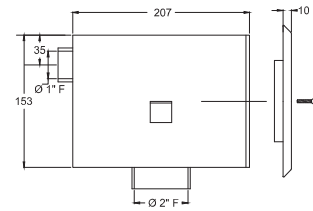
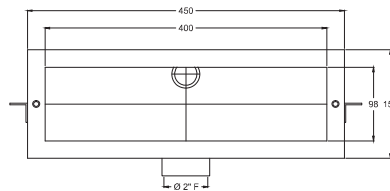
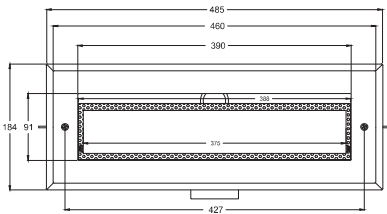
Norma valida solo se collegata la presa d'aria sul troppo pieno.

Ⓖ Standard valid only if air intake connection on overflow.

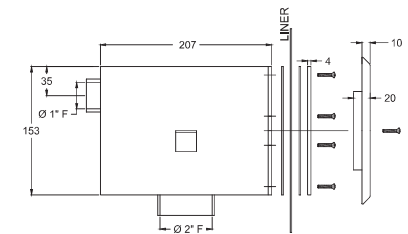
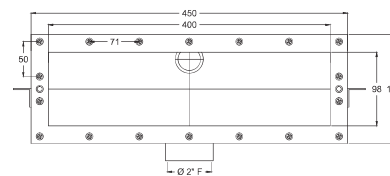
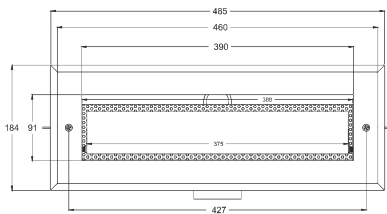
Ⓕ Norme valable seulement si raccordé l'entrée d'air sur le trop plein.



COD.: 19122



COD.: 19123



Acqua dolce / Fresh water / Eau douce

Cod.	Descrizione/Description	Portata/Flow rate/Débit	Euro
19122	bocca / mouth / bouche 400 mm- C.A. / Concrete / B.A.	9-12 MC/H	
19123	bocca / mouth / bouche 400 mm - LINER	9-12 MC/H	
19124	bocca / mouth / bouche 600 mm- C.A. / Concrete / B.A.	9-12 MC/H	
19125	bocca / mouth / bouche 600 mm - LINER	9-12 MC/H	

Acqua salata / Salt water / Eau salée

Cod.	Descrizione/Description	Portata/Flow rate/Débit	Euro
19122S	bocca / mouth / bouche 400 mm- C.A. / Concrete / B.A.	9-12 MC/H	
19123S	bocca / mouth / bouche 400 mm - LINER	9-12 MC/H	
19124S	bocca / mouth / bouche 600 mm- C.A. / Concrete / B.A.	9-12 MC/H	
19125S	bocca / mouth / bouche 600 mm - LINER	9-12 MC/H	